

**DIVISION OF BUILDING SAFETY
ELECTRICAL BUREAU**

INTRA-DIVISIONAL MEMO

DATE: May 22, 2007
TO: All Electrical Inspectors
FROM: Jeff Fitzloff
Electrical Bureau Chief
SUBJECT: Bath tubs Lights, Switches and Receptacles.

I have had several questions about lights, switches, and receptacles near bath tubs.

ARTICLE 404 Switches

404.4 Wet Locations

A switch or circuit breaker in a wet location or outside of a building shall be enclosed in a weatherproof enclosure or cabinet that shall comply with 312.2(A). Switches shall not be installed within wet locations in tub or shower spaces unless installed as part of a listed tub or shower assembly.

ARTICLE 406 Receptacles, Cord Connectors, and Attachment Plugs (Caps)

406.8 Receptacles in Damp or Wet Locations

(C) Bathtub and Shower Space Receptacles shall not be installed within or directly over a bathtub or shower stall.

ARTICLE 410 Luminaires (Lighting Fixtures), Lampholders, and Lamps

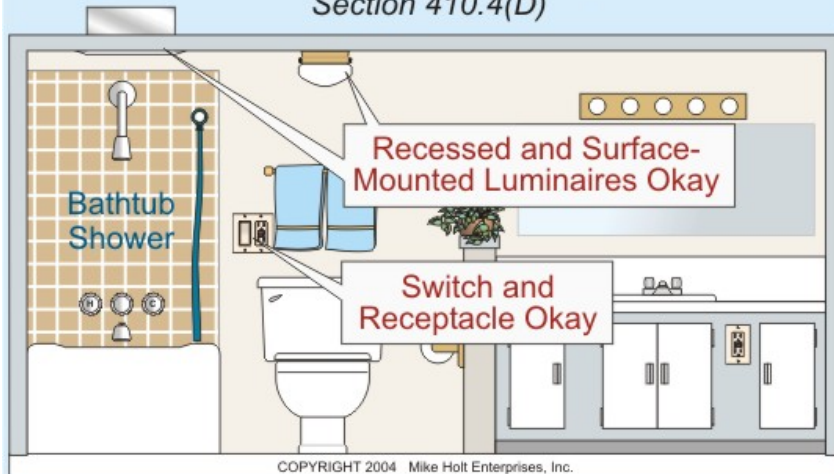
410.4 Luminaires (Fixtures) in Specific Locations

(D) Bathtub and Shower Areas No parts of cord-connected luminaires (fixtures), chain-, cable-, or cord-suspended-luminaires (fixtures), lighting track, pendants, or ceiling-suspended (paddle) fans shall be located within a zone measured 900 mm (3 ft) horizontally and 2.5 m (8 ft) vertically from the top of the bathtub rim or shower stall threshold. This zone is all encompassing and includes the zone directly over the tub or shower stall. Luminaires (lighting fixtures) located in this zone shall be listed for damp locations, or listed for wet locations where subject to shower spray.

Now that I have stated all of the code language just what does this mean?

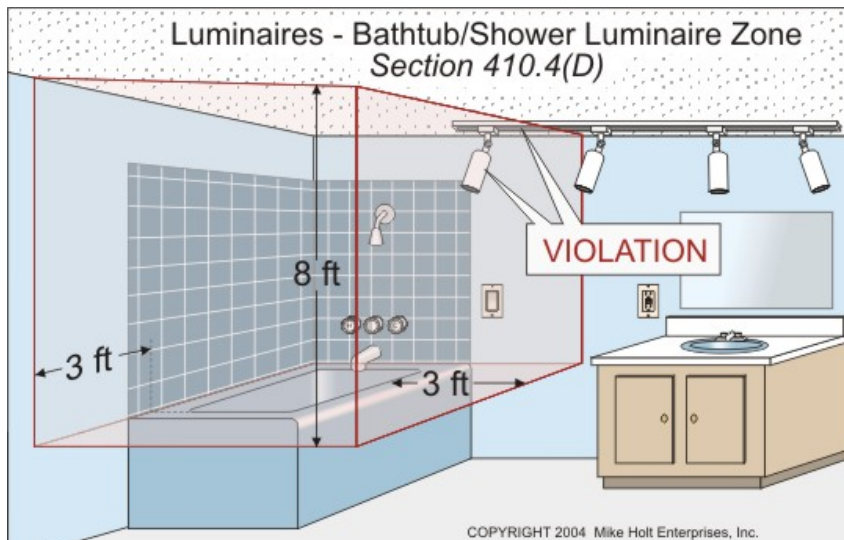
The 3 ft by 8 ft bathtub/shower luminaire zone does not apply to recessed or surface mounted luminaires, switches, or receptacles.

Location of Luminaires
Near Bathtub and Shower Space
Section 410.4(D)



The 3 ft by 8 ft bathtub/shower luminaire zone restriction does not apply to recessed or surface mounted luminaires, switches, or receptacles.

Luminaires - Bathtub/Shower Luminaire Zone
Section 410.4(D)



No part of chain-, cable-, or cord-suspended luminaire, track lighting, pendant, or ceiling paddle fan is permitted within the bathtub/shower luminaire zone.